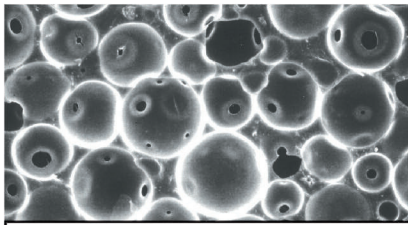
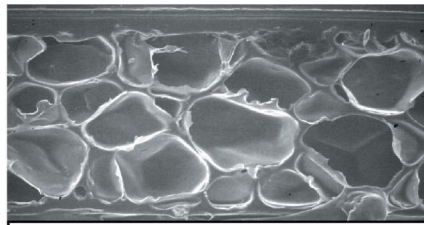


WHAT'S SPECIAL ABOUT R/bak SA 3000 CUSHION MOUNTING TAPES?



Open-Cell Structure of Rogers Urethane Foam



Closed Cell Structure of Medium Polyethylene Foam

- | | |
|---|---|
| Improved Print Quality | + |
| Fewer Press Adjustments | + |
| Faster Press Speeds | + |
| Easier Mounting & Demounting | + |
| Consistent Print Results over Long Runs | = |

PRODUCTION COST SAVINGS WITH A REDUCTION IN WASTE AND LESS PRESS DOWNTIME

WHAT CAN R/bak SA 3000 DO TO HELP SOLVE MY PRINT PROBLEMS?

**Fewer Press Adjustments:
Helps Eliminate Gear Banding**



Competitive Tape



R/bak® Mounting Tape



**Consistent Quality Over Long Runs:
Fewer Press Adjustments
(1 hour 45 minutes at 400 fpm)**



R/bak
Mounting
Tape



Poly-
ethylene

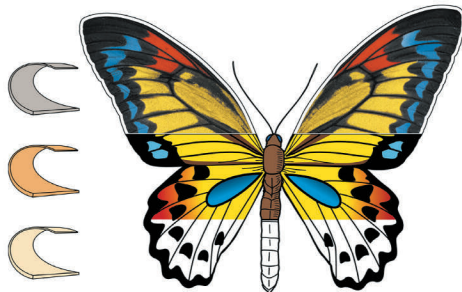


**Improved Print Range
With R/bak® Material**

**True Combination
Performance**

- ✓ Excellent Solids
- ✓ Low Dot Gain

**Butterfly printed
with a single tape**



**R/bak® Material is Durable:
Performance After Over Impression**



**Polyurethane
(R/bak Material)**



**Polyethylene
(Competitor)**

The information contained in this Note is intended to assist you in using Rogers R/bak Compressible Plate Mounting Materials. It is not intended to and does not create any warranties, express or implied, including any warranty of merchantability or fitness for a particular purpose or that the results shown in this Note will be achieved by a user for a particular purpose. The user should determine the suitability of Rogers R/bak Compressible Plate Mounting Materials for each application.

The world runs better with Rogers.®

The Rogers logo, The world runs better with Rogers., and R/bak are licensed trademarks of Rogers Corporation.
© 2007 Rogers Corporation. All rights reserved. Printed in USA.
7090-0607-PDF, Publication #12-085