

D381B Module IC Designer's Kit Guide

Introduction:

Rogers DUREL® D381B Module IC Designer's Kit is intended to aid you in using the DUREL D381B Module IC driver that meets your brightness requirements from the EL lamp. A list of components contained in the kit is in Table 1.

Table 1: List of Components	
Description	Qty
D381B Module IC unit samples	5
D381B Module IC Designer's Kit Board	1
Kit Board Power Connector	1

The D381B Module IC Designer's Kit Board:

The Designer's Kit Board (see Figure 1), which comes with a D381B Module IC already soldered to the board, is a useful tool for powering a D381B Module IC driver circuit for any application. A jumper header on the Designer's Kit Board is normally attached to connect E to V+ or GND. This jumper header can be removed to control the enable pin (E) with an externally supplied signal. Make sure that an appropriate load is connected between the output (Vout) and GND before applying power to the chip through the Designer's Kit Board power connections.

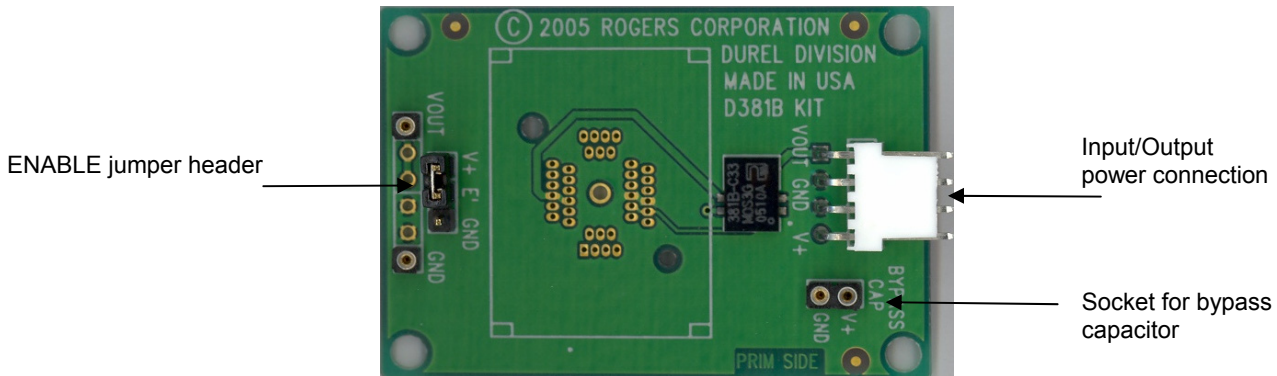


Figure 1: The D381B Module IC Designer's Kit Board

ISO 9001:2000, ISO/TS 16949:2002, and ISO 14001:1996 Certified

The information contained in this guide is intended to assist you in designing with Rogers' EL systems. It is not intended to and does not create any warranties, express or implied, including any warranty of merchantability or fitness for a particular purpose or that the results shown on the guide will be achieved by a user for a particular purpose. The user should determine the suitability of Rogers' EL systems for each application

These EL drivers are covered by one or more of the following U.S. patents #5,313,141; #5,789,870; #5,677,599. Corresponding foreign patents are issued or pending.