

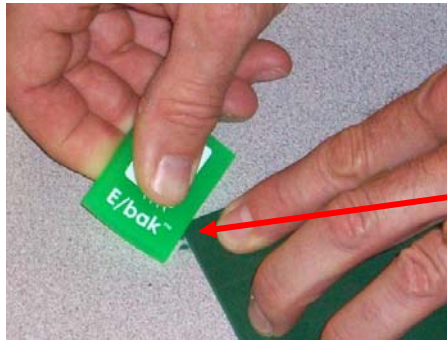
Guidelines for Use of E/bak™ SF

Foam Removal for Installation of Edge Hardware:

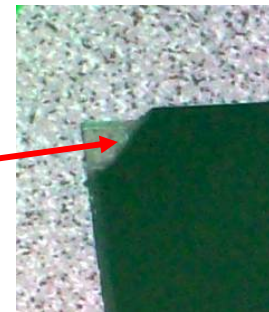
Removal of the E/bak™ SF foam from the PET support film is simple if you follow these basic guidelines:



1. **Cutting** - Score the foam with a sharp razor. Be sure to cut through the foam, but do not apply so much force as to deeply cut the PET film.



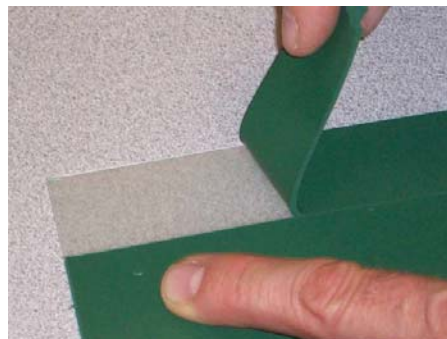
2. **Triangle** - Using a hard eraser (ask your Rogers R/bak® Distributor – they will supply these for free), remove a “triangle” of foam from one of the corners as shown in #3.



3. Ensure the foam is completely removed from the triangle – the PET film should be “crystal clear”.



4. **Thumb Roll** - Using a rolling motion with your thumb, “roll” the foam from the PET film.



5. **Removing Foam Strip** - Once the foam cleanly releases from the PET, it removes easily.



Guidelines for Use of E/bak™ SF (continued)

Preparing PET Surface for Plate Mounting:

Insuring a secure bond between plate and PET film is vital to the performance of the Plate assembly on press. Proper preparation of the PET surface should include cleaning with IPA (isopropyl alcohol) or an aqueous cleaner before application of the double sided PSA tape.

Visit the link below for more information on Rogers' E/bak product range.

<http://www.rogerscorp.com/hpf/printing/productline/10/E-bak.aspx>