



Chemical Laboratory - Kao., SGS Taiwan Ltd.

# Test Report

No. : KE/2017/C0119    Date : 2017/12/11    Page : 1 of 8

ROGERS CORPORATION  
171 WEST SAINT CHARLES ROAD, CAROL STREAM, ILLINOIS 60188 USA

The following sample(s) was/were submitted and identified by/on behalf of the client as :

Sample Description	:	SILICONE BASE MATERIAL
Style/Item No.	:	7129 GRAY 0.250"
Color	:	GRAY
Material Component	:	SILICONE FOAM
Country of Origin	:	USA
Country of Destination	:	TAIWAN
Lot No.	:	17H35358002
Sample Receiving Date	:	2017/12/05
Testing Period	:	2017/12/05 TO 2017/12/11
Sample Submitted By	:	ROGERS CORPORATION

Test Result(s) : Please refer to next page(s).

*Ray Chang*  
  
**Ray Chang Ph.D. Manager - Techn**  
 Signed for and on behalf of  
**SGS Taiwan Limited**

Unless otherwise stated the results shown in this test report refer only to the sample(s) tested. This test report cannot be reproduced, except in full, without prior written permission of the Company. 除非另有說明，此報告結果僅對測試之樣品負責。本報告未經本公司書面許可，不可部分複製。  
 This document is issued by the Company subject to its General Conditions of Service printed overleaf, available on request or accessible at [www.sgs.com/terms\\_and\\_conditions.htm](http://www.sgs.com/terms_and_conditions.htm) and, for electronic format documents, subject to Terms and Conditions for Electronic Documents at [www.sgs.com/terms\\_e-document.htm](http://www.sgs.com/terms_e-document.htm). Attention is drawn to the limitation of liability, indemnification and jurisdiction issues defined therein. Any holder of this document is advised that information contained hereon reflects the Company's findings at the time of its intervention only and within the limits of Client's instructions, if any. The Company's sole responsibility is to its Client and this document does not exonerate parties to a transaction from exercising all their rights and obligations under the transaction documents. This document cannot be reproduced except in full, without prior written approval of the Company. Any unauthorized alteration, forgery or falsification of the content or appearance of this document is unlawful and offenders may be prosecuted to the fullest extent of the law.



Chemical Laboratory - Kao., SGS Taiwan Ltd.

# Test Report

No. : KE/2017/C0119 Date : 2017/12/11 Page : 2 of 8

ROGERS CORPORATION  
171 WEST SAINT CHARLES ROAD, CAROL STREAM, ILLINOIS 60188 USA

## Test Result(s)

PART NAME NO.1 : GRAY FOAM

Test Item (s):	Unit	Method	MDL	Result	
				No.1	
Cadmium (Cd)	mg/kg	With reference to IEC 62321-5: 2013 and performed by ICP-AES.	2	n.d.	
Lead (Pb)	mg/kg	With reference to IEC 62321-5: 2013 and performed by ICP-AES.	2	n.d.	
Mercury (Hg)	mg/kg	With reference to IEC 62321-4: 2013 and performed by ICP-AES.	2	n.d.	
Hexavalent Chromium Cr(VI)	mg/kg	With reference to IEC 62321-7-2:2017 and performed by UV-VIS.	8	n.d.	
<b>Sum of PBBs</b>	mg/kg	With reference to IEC 62321-6:2015 and performed by GC/MS.	-	n.d.	
Monobromobiphenyl	mg/kg		5	n.d.	
Dibromobiphenyl	mg/kg		5	n.d.	
Tribromobiphenyl	mg/kg		5	n.d.	
Tetrabromobiphenyl	mg/kg		5	n.d.	
Pentabromobiphenyl	mg/kg		5	n.d.	
Hexabromobiphenyl	mg/kg		5	n.d.	
Heptabromobiphenyl	mg/kg		5	n.d.	
Octabromobiphenyl	mg/kg		5	n.d.	
Nonabromobiphenyl	mg/kg		5	n.d.	
Decabromobiphenyl	mg/kg		5	n.d.	
<b>Sum of PBDEs</b>	mg/kg		With reference to IEC 62321-6:2015 and performed by GC/MS.	-	n.d.
Monobromodiphenyl ether	mg/kg			5	n.d.
Dibromodiphenyl ether	mg/kg	5		n.d.	
Tribromodiphenyl ether	mg/kg	5		n.d.	
Tetrabromodiphenyl ether	mg/kg	5		n.d.	
Pentabromodiphenyl ether	mg/kg	5		n.d.	
Hexabromodiphenyl ether	mg/kg	5		n.d.	
Heptabromodiphenyl ether	mg/kg	5		n.d.	
Octabromodiphenyl ether	mg/kg	5		n.d.	
Nonabromodiphenyl ether	mg/kg	5		n.d.	
Decabromodiphenyl ether	mg/kg	5	n.d.		

Unless otherwise stated the results shown in this test report refer only to the sample(s) tested. This test report cannot be reproduced, except in full, without prior written permission of the Company. 除非另有說明，此報告結果僅對測試之樣品負責。本報告未經本公司書面許可，不可部分複製。  
This document is issued by the Company subject to its General Conditions of Service printed overleaf, available on request or accessible at [www.sgs.com/terms\\_and\\_conditions.htm](http://www.sgs.com/terms_and_conditions.htm) and, for electronic format documents, subject to Terms and Conditions for Electronic Documents at [www.sgs.com/terms\\_e-document.htm](http://www.sgs.com/terms_e-document.htm). Attention is drawn to the limitation of liability, indemnification and jurisdiction issues defined therein. Any holder of this document is advised that information contained hereon reflects the Company's findings at the time of its intervention only and within the limits of Client's instructions, if any. The Company's sole responsibility is to its Client and this document does not exonerate parties to a transaction from exercising all their rights and obligations under the transaction documents. This document cannot be reproduced except in full, without prior written approval of the Company. Any unauthorized alteration, forgery or falsification of the content or appearance of this document is unlawful and offenders may be prosecuted to the fullest extent of the law.

SGS Taiwan Ltd.  
台灣檢驗科技股份有限公司

No. 61, Kai-Fa Road, Nanzih Export Processing Zone, Kaohsiung, Taiwan /  
t + 886 (07)301 2121

f + 886 (07)3010867

高雄市楠梓加工出口區開發路61號

[www.tw.sgs.com](http://www.tw.sgs.com)

Member of the SGS Group



Chemical Laboratory - Kao., SGS Taiwan Ltd.

# Test Report

No. : KE/2017/C0119 Date : 2017/12/11 Page : 3 of 8

ROGERS CORPORATION  
171 WEST SAINT CHARLES ROAD, CAROL STREAM, ILLINOIS 60188 USA

Test Item (s):	Unit	Method	MDL	Result
				No.1
DIBP (Di-isobutyl phthalate) (CAS No.: 84-69-5)	mg/kg	With reference to IEC 62321-8:2017. Analysis was performed by GC/MS.	50	n.d.
DBP (Dibutyl phthalate) (CAS No.: 84-74-2)	mg/kg	With reference to IEC 62321-8:2017. Analysis was performed by GC/MS.	50	n.d.
BBP (Butyl Benzyl phthalate) (CAS No.: 85-68-7)	mg/kg	With reference to IEC 62321-8:2017. Analysis was performed by GC/MS.	50	n.d.
DEHP (Di- (2-ethylhexyl) phthalate) (CAS No.: 117-81-7)	mg/kg	With reference to IEC 62321-8:2017. Analysis was performed by GC/MS.	50	n.d.
<b>Halogen</b>				
Halogen-Fluorine (F) (CAS No.: 14762-94-8)	mg/kg	With reference to BS EN 14582:2016. Analysis was performed by IC.	50	n.d.
Halogen-Chlorine (Cl) (CAS No.: 22537-15-1)	mg/kg	With reference to BS EN 14582:2016. Analysis was performed by IC.	50	671
Halogen-Bromine (Br) (CAS No.: 10097-32-2)	mg/kg	With reference to BS EN 14582:2016. Analysis was performed by IC.	50	n.d.
Halogen-Iodine (I) (CAS No.: 14362-44-8)	mg/kg	With reference to BS EN 14582:2016. Analysis was performed by IC.	50	n.d.

- Note : 1. mg/kg = ppm ; 0.1wt% = 1000ppm  
2. n.d. = Not Detected  
3. MDL = Method Detection Limit

Unless otherwise stated the results shown in this test report refer only to the sample(s) tested. This test report cannot be reproduced, except in full, without prior written permission of the Company. 除非另有說明，此報告結果僅對測試之樣品負責。本報告未經本公司書面許可，不可部分複製。  
This document is issued by the Company subject to its General Conditions of Service printed overleaf, available on request or accessible at [www.sgs.com/terms\\_and\\_conditions.htm](http://www.sgs.com/terms_and_conditions.htm) and, for electronic format documents, subject to Terms and Conditions for Electronic Documents at [www.sgs.com/terms\\_e-document.htm](http://www.sgs.com/terms_e-document.htm). Attention is drawn to the limitation of liability, indemnification and jurisdiction issues defined therein. Any holder of this document is advised that information contained hereon reflects the Company's findings at the time of its intervention only and within the limits of Client's instructions, if any. The Company's sole responsibility is to its Client and this document does not exonerate parties to a transaction from exercising all their rights and obligations under the transaction documents. This document cannot be reproduced except in full, without prior written approval of the Company. Any unauthorized alteration, forgery or falsification of the content or appearance of this document is unlawful and offenders may be prosecuted to the fullest extent of the law.

SGS Taiwan Ltd.  
台灣檢驗科技股份有限公司

No. 61, Kai-Fa Road, Nanzih Export Processing Zone, Kaohsiung, Taiwan /  
t + 886 (07)301 2121

高雄市楠梓加工出口區開發路61號

f + 886 (07)3010867

[www.tw.sgs.com](http://www.tw.sgs.com)

Member of the SGS Group

# Test Report

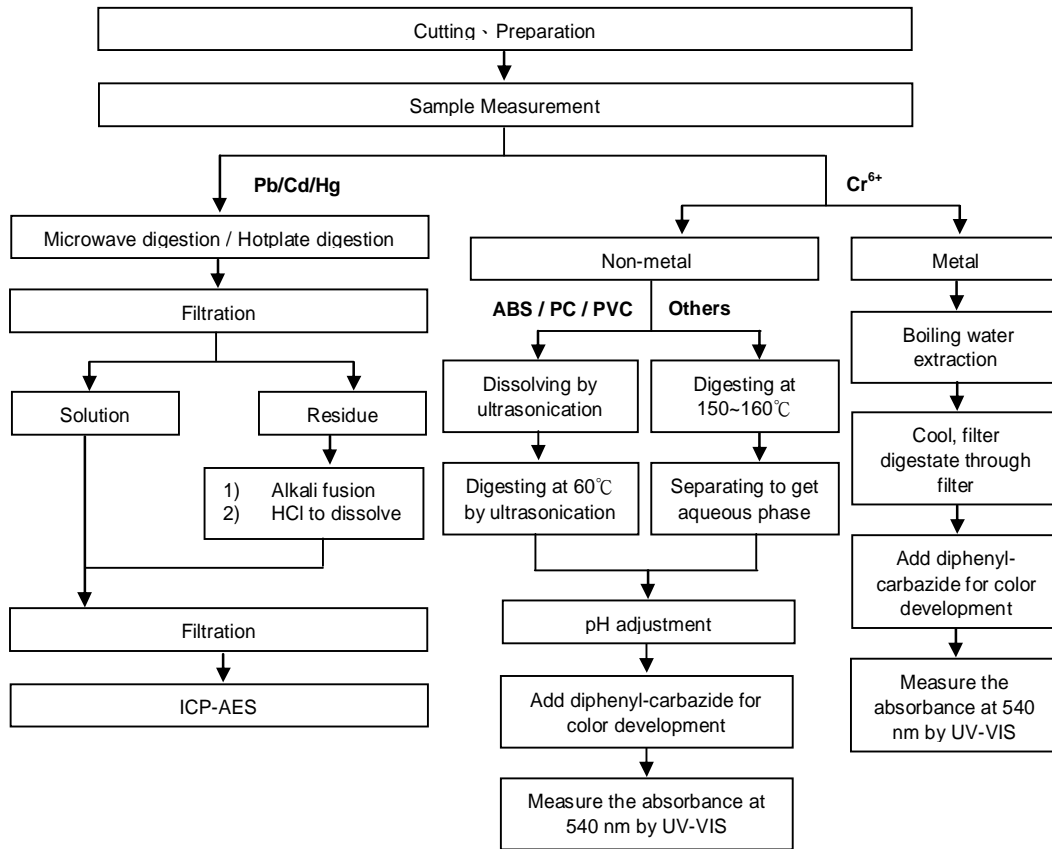
No. : KE/2017/C0119 Date : 2017/12/11 Page : 4 of 8

ROGERS CORPORATION  
171 WEST SAINT CHARLES ROAD, CAROL STREAM, ILLINOIS 60188 USA

## Analytical flow chart of Heavy Metal

These samples were dissolved totally by pre-conditioning method according to below flow chart. (Cr<sup>6+</sup> test method excluded)

- Technician : Jony Liu
- Supervisor: Ray Chang



Unless otherwise stated the results shown in this test report refer only to the sample(s) tested. This test report cannot be reproduced, except in full, without prior written permission of the Company. 除非另有說明，此報告結果僅對測試之樣品負責。本報告未經本公司書面許可，不可部分複製。  
This document is issued by the Company subject to its General Conditions of Service printed overleaf, available on request or accessible at [www.sgs.com/terms\\_and\\_conditions.htm](http://www.sgs.com/terms_and_conditions.htm) and, for electronic format documents, subject to Terms and Conditions for Electronic Documents at [www.sgs.com/terms\\_e-document.htm](http://www.sgs.com/terms_e-document.htm). Attention is drawn to the limitation of liability, indemnification and jurisdiction issues defined therein. Any holder of this document is advised that information contained hereon reflects the Company's findings at the time of its intervention only and within the limits of Client's instructions, if any. The Company's sole responsibility is to its Client and this document does not exonerate parties to a transaction from exercising all their rights and obligations under the transaction documents. This document cannot be reproduced except in full, without prior written approval of the Company. Any unauthorized alteration, forgery or falsification of the content or appearance of this document is unlawful and offenders may be prosecuted to the fullest extent of the law.

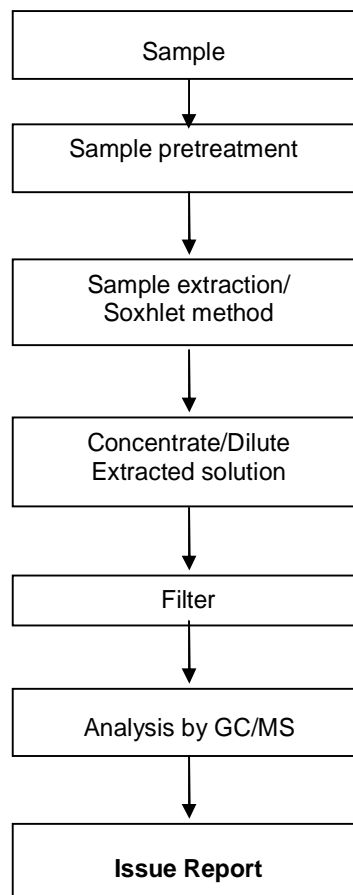
## Test Report

No. : KE/2017/C0119 Date : 2017/12/11 Page : 5 of 8

ROGERS CORPORATION  
171 WEST SAINT CHARLES ROAD, CAROL STREAM, ILLINOIS 60188 USA

### PBB/PBDE analytical FLOW CHART

- 1) Name of the person who made measurement: Dorothy Chen
- 2) Name of the person in charge of measurement: Ray Chang



Unless otherwise stated the results shown in this test report refer only to the sample(s) tested. This test report cannot be reproduced, except in full, without prior written permission of the Company. 除非另有說明，此報告結果僅對測試之樣品負責。本報告未經本公司書面許可，不可部分複製。  
This document is issued by the Company subject to its General Conditions of Service printed overleaf, available on request or accessible at [www.sgs.com/terms\\_and\\_conditions.htm](http://www.sgs.com/terms_and_conditions.htm) and, for electronic format documents, subject to Terms and Conditions for Electronic Documents at [www.sgs.com/terms\\_e-document.htm](http://www.sgs.com/terms_e-document.htm). Attention is drawn to the limitation of liability, indemnification and jurisdiction issues defined therein. Any holder of this document is advised that information contained hereon reflects the Company's findings at the time of its intervention only and within the limits of Client's instructions, if any. The Company's sole responsibility is to its Client and this document does not exonerate parties to a transaction from exercising all their rights and obligations under the transaction documents. This document cannot be reproduced except in full, without prior written approval of the Company. Any unauthorized alteration, forgery or falsification of the content or appearance of this document is unlawful and offenders may be prosecuted to the fullest extent of the law.

# Test Report

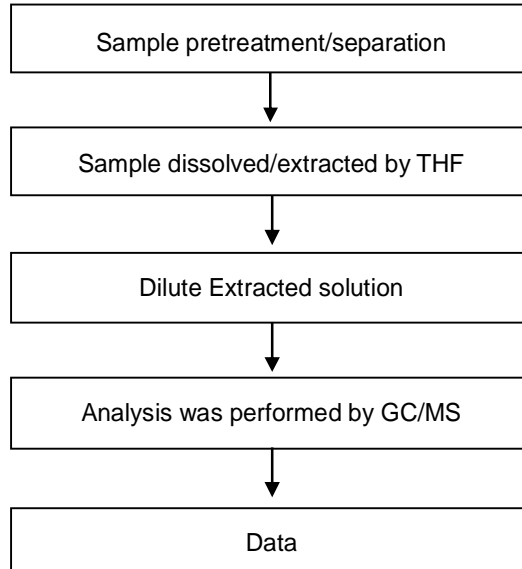
No. : KE/2017/C0119    Date : 2017/12/11    Page : 6 of 8

ROGERS CORPORATION  
171 WEST SAINT CHARLES ROAD, CAROL STREAM, ILLINOIS 60188 USA

## Analytical flow chart of phthalate content

- Name of the person who made measurement: Dorothy Chen
- Name of the person in charge of measurement: Ray Chang

### 【Test method: IEC 62321-8】



Unless otherwise stated the results shown in this test report refer only to the sample(s) tested. This test report cannot be reproduced, except in full, without prior written permission of the Company. 除非另有說明，此報告結果僅對測試之樣品負責。本報告未經本公司書面許可，不可部分複製。  
This document is issued by the Company subject to its General Conditions of Service printed overleaf, available on request or accessible at [www.sgs.com/terms\\_and\\_conditions.htm](http://www.sgs.com/terms_and_conditions.htm) and, for electronic format documents, subject to Terms and Conditions for Electronic Documents at [www.sgs.com/terms\\_e-document.htm](http://www.sgs.com/terms_e-document.htm). Attention is drawn to the limitation of liability, indemnification and jurisdiction issues defined therein. Any holder of this document is advised that information contained hereon reflects the Company's findings at the time of its intervention only and within the limits of Client's instructions, if any. The Company's sole responsibility is to its Client and this document does not exonerate parties to a transaction from exercising all their rights and obligations under the transaction documents. This document cannot be reproduced except in full, without prior written approval of the Company. Any unauthorized alteration, forgery or falsification of the content or appearance of this document is unlawful and offenders may be prosecuted to the fullest extent of the law.

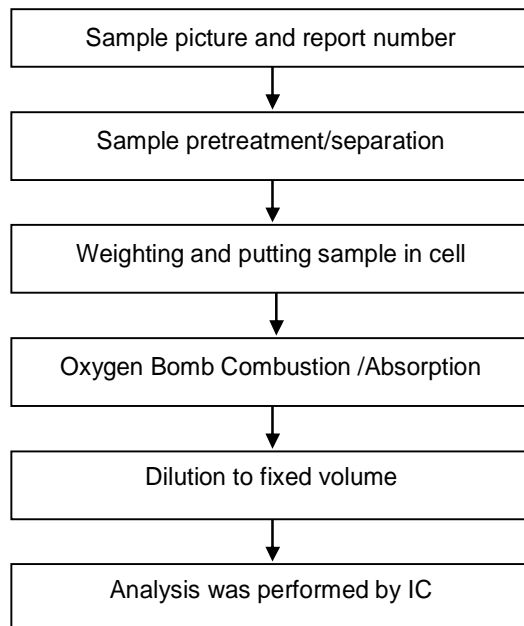
# Test Report

No. : KE/2017/C0119    Date : 2017/12/11    Page : 7 of 8

ROGERS CORPORATION  
171 WEST SAINT CHARLES ROAD, CAROL STREAM, ILLINOIS 60188 USA

## Analytical flow chart of halogen content

- 1) Name of the person who made measurement: Jean Hung
- 2) Name of the person in charge of measurement: Ray Chang



Unless otherwise stated the results shown in this test report refer only to the sample(s) tested. This test report cannot be reproduced, except in full, without prior written permission of the Company. 除非另有說明，此報告結果僅對測試之樣品負責。本報告未經本公司書面許可，不可部分複製。  
This document is issued by the Company subject to its General Conditions of Service printed overleaf, available on request or accessible at [www.sgs.com/terms\\_and\\_conditions.htm](http://www.sgs.com/terms_and_conditions.htm) and, for electronic format documents, subject to Terms and Conditions for Electronic Documents at [www.sgs.com/terms\\_e-document.htm](http://www.sgs.com/terms_e-document.htm). Attention is drawn to the limitation of liability, indemnification and jurisdiction issues defined therein. Any holder of this document is advised that information contained hereon reflects the Company's findings at the time of its intervention only and within the limits of Client's instructions, if any. The Company's sole responsibility is to its Client and this document does not exonerate parties to a transaction from exercising all their rights and obligations under the transaction documents. This document cannot be reproduced except in full, without prior written approval of the Company. Any unauthorized alteration, forgery or falsification of the content or appearance of this document is unlawful and offenders may be prosecuted to the fullest extent of the law.

## Test Report

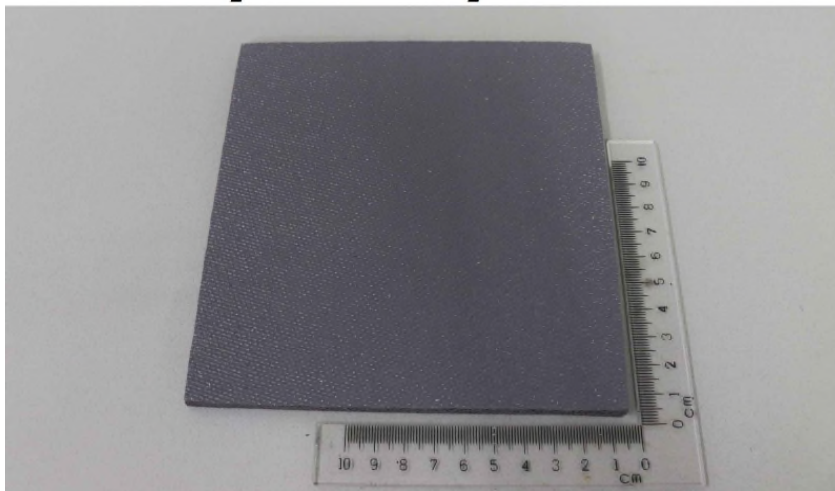
No. : KE/2017/C0119 Date : 2017/12/11 Page : 8 of 8

ROGERS CORPORATION

171 WEST SAINT CHARLES ROAD, CAROL STREAM, ILLINOIS 60188 USA

\* The tested sample / part is marked by an arrow if it's shown on the photo. \*

# KE/2017/C0119



\*\* End of Report \*\*

Unless otherwise stated the results shown in this test report refer only to the sample(s) tested. This test report cannot be reproduced, except in full, without prior written permission of the Company. 除非另有說明，此報告結果僅對測試之樣品負責。本報告未經本公司書面許可，不可部分複製。  
This document is issued by the Company subject to its General Conditions of Service printed overleaf, available on request or accessible at [www.sgs.com/terms\\_and\\_conditions.htm](http://www.sgs.com/terms_and_conditions.htm) and, for electronic format documents, subject to Terms and Conditions for Electronic Documents at [www.sgs.com/terms\\_e-document.htm](http://www.sgs.com/terms_e-document.htm). Attention is drawn to the limitation of liability, indemnification and jurisdiction issues defined therein. Any holder of this document is advised that information contained hereon reflects the Company's findings at the time of its intervention only and within the limits of Client's instructions, if any. The Company's sole responsibility is to its Client and this document does not exonerate parties to a transaction from exercising all their rights and obligations under the transaction documents. This document cannot be reproduced except in full, without prior written approval of the Company. Any unauthorized alteration, forgery or falsification of the content or appearance of this document is unlawful and offenders may be prosecuted to the fullest extent of the law.